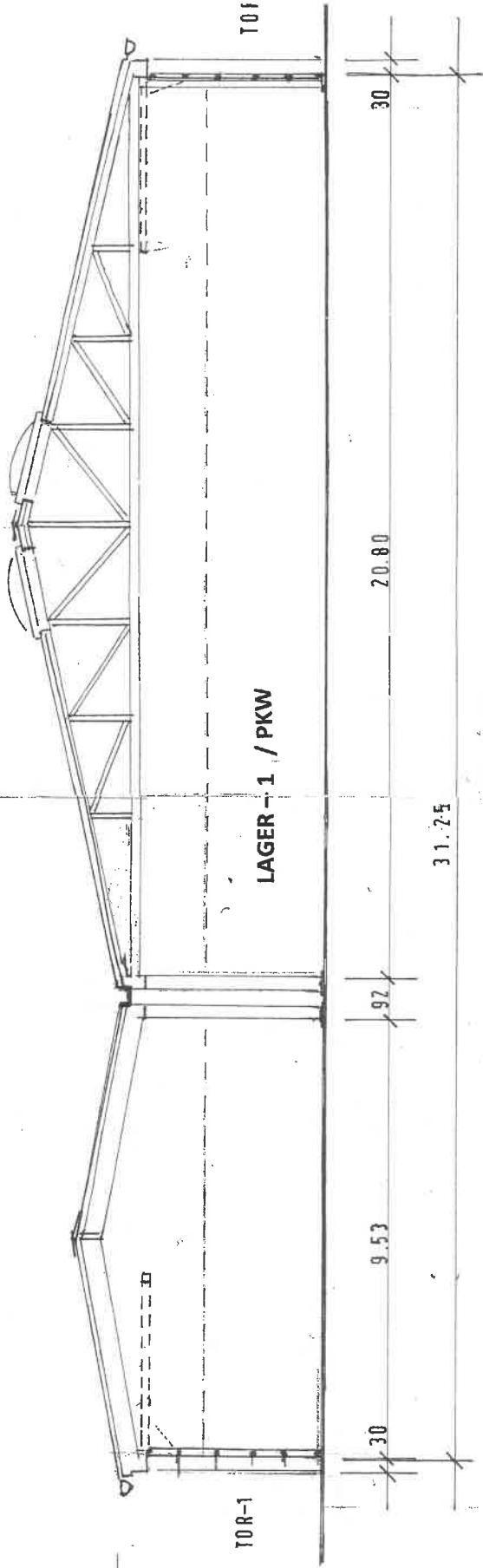


ANSICHT WEST

NEU

INDUSTRIETOR (2)

+4.40



TOR-1

LAGER - 1 / PKW

TOF

30

9.53

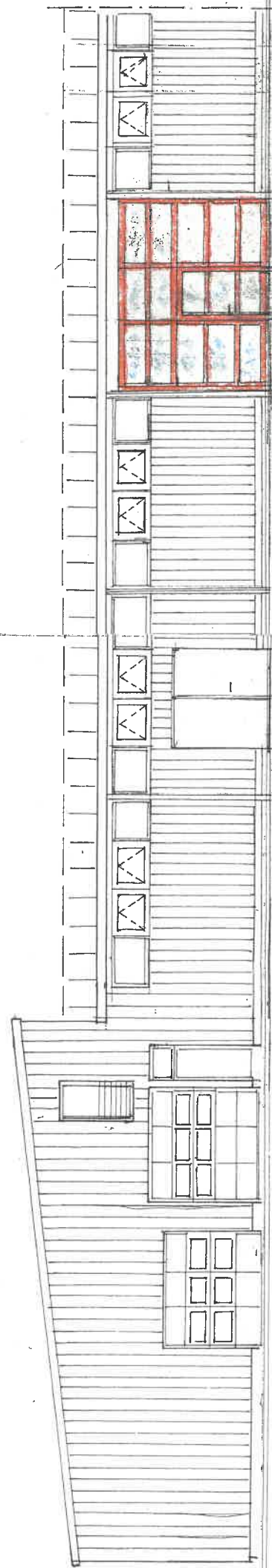
92

20.80

30

31.25

SCHNITT OST - WEST



ANSICHT OST

EINGANG LAGER - 2

EINGANG LAGER - 1

NEU

INDUSTRIETOR (1)